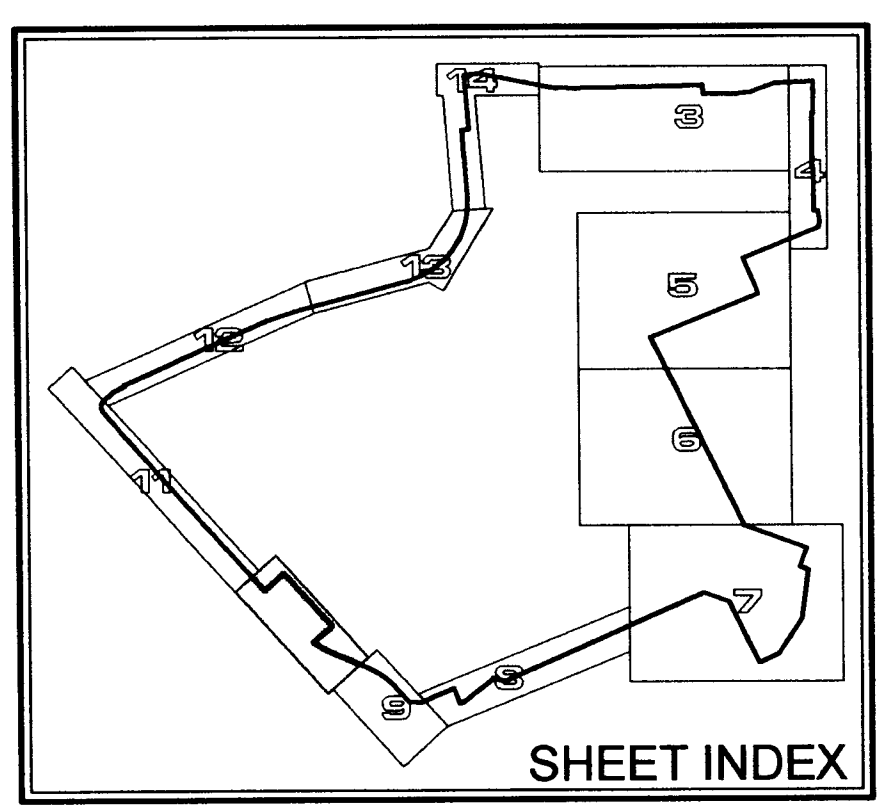
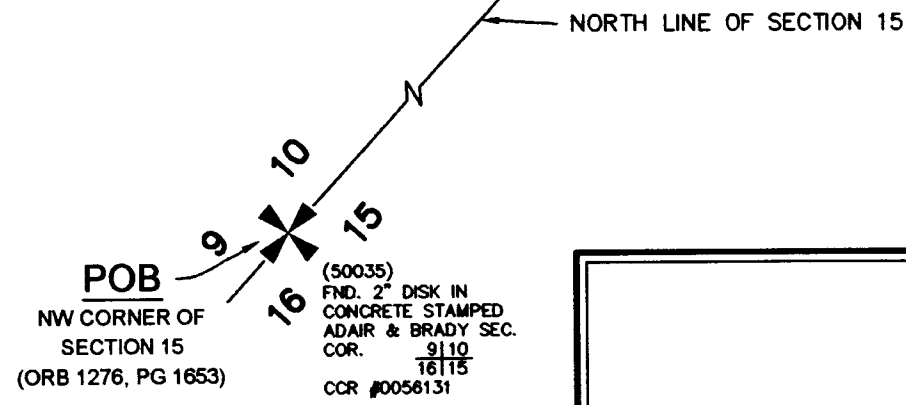
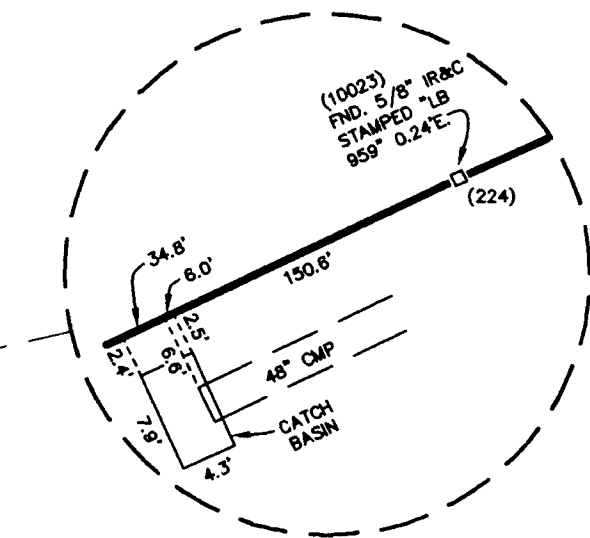
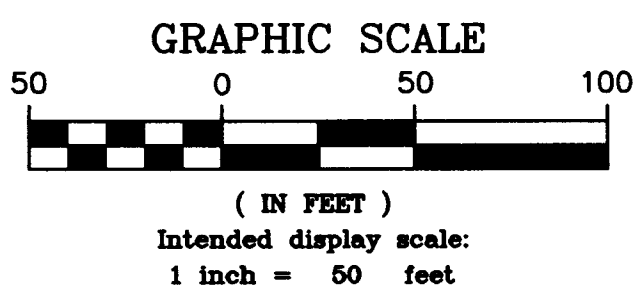
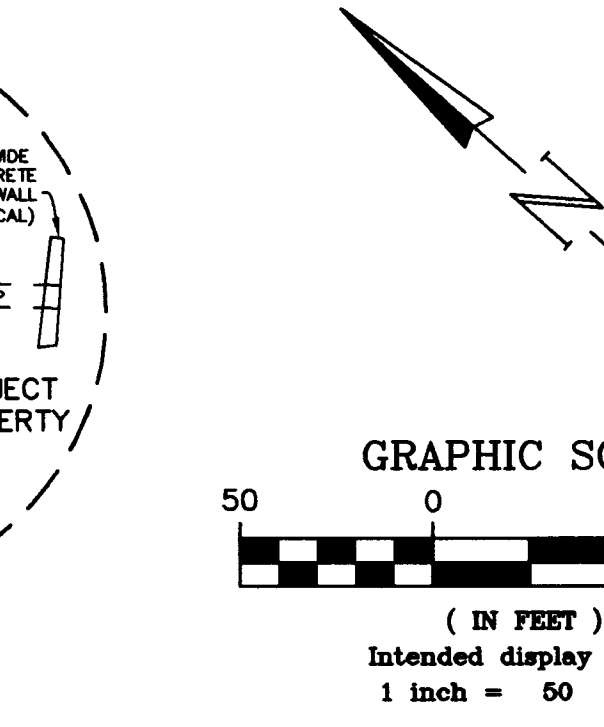
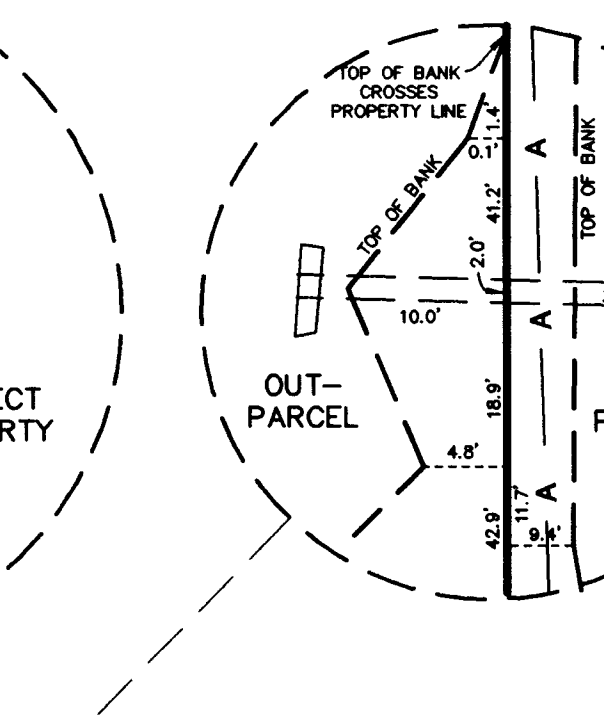
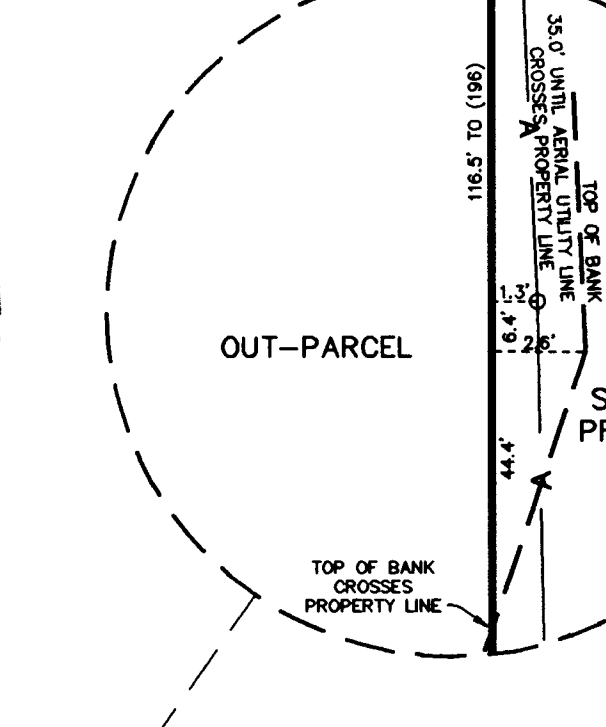
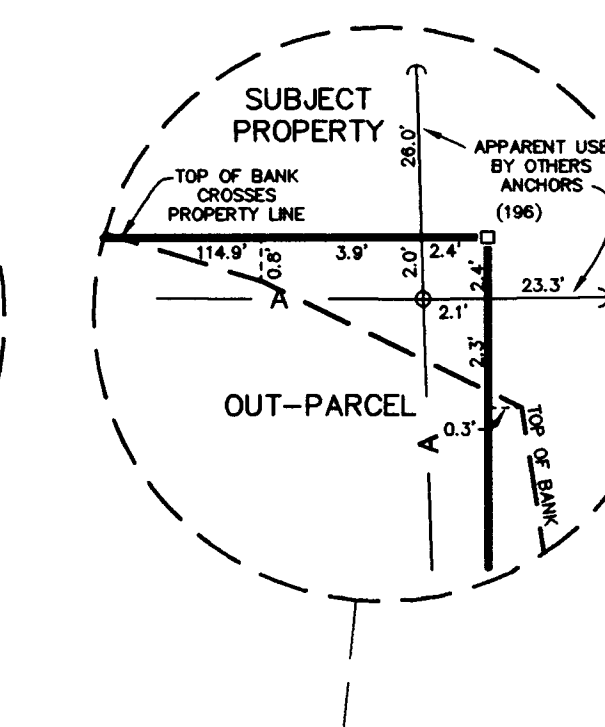
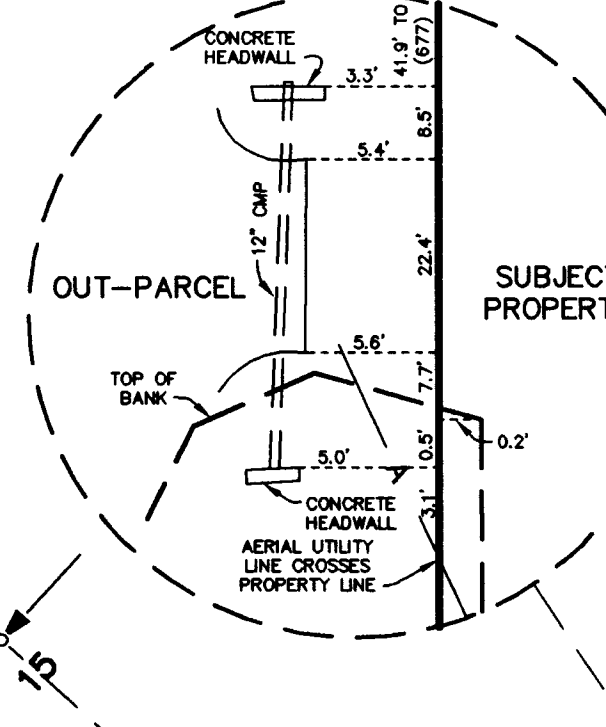
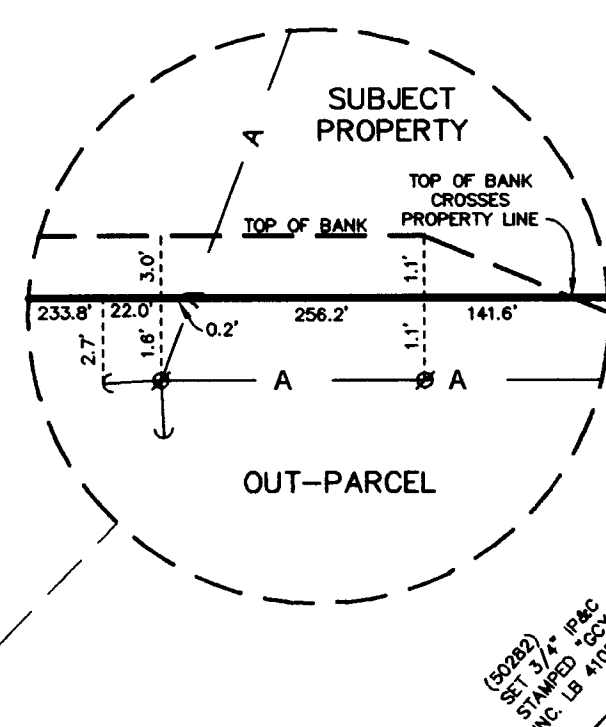
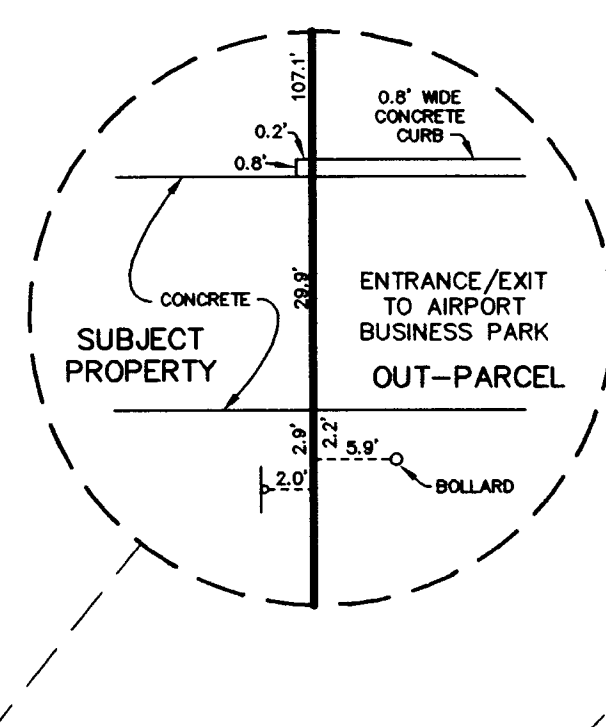
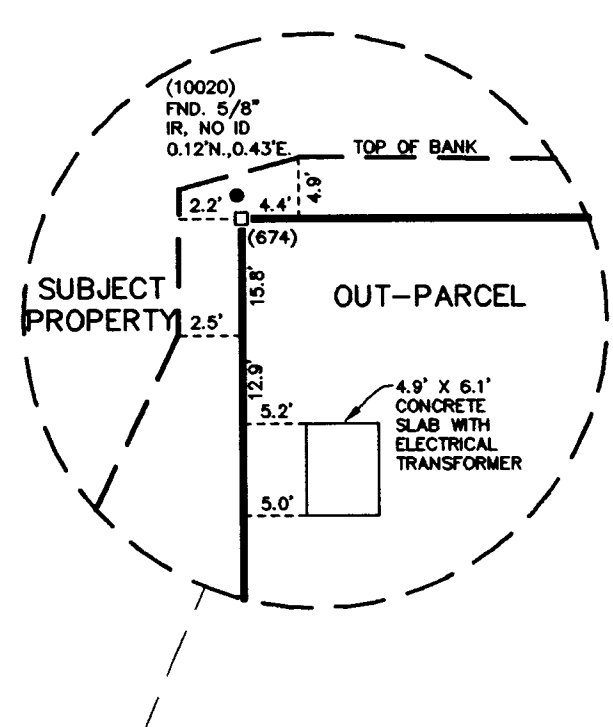
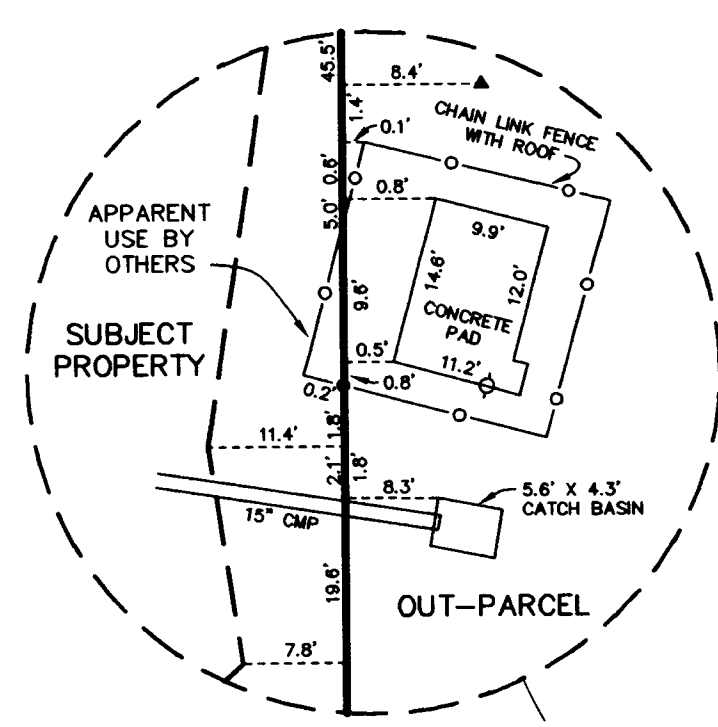


MATCHLINE J - SEE SHEET 11

MATCHLINE I - SEE SHEET 9

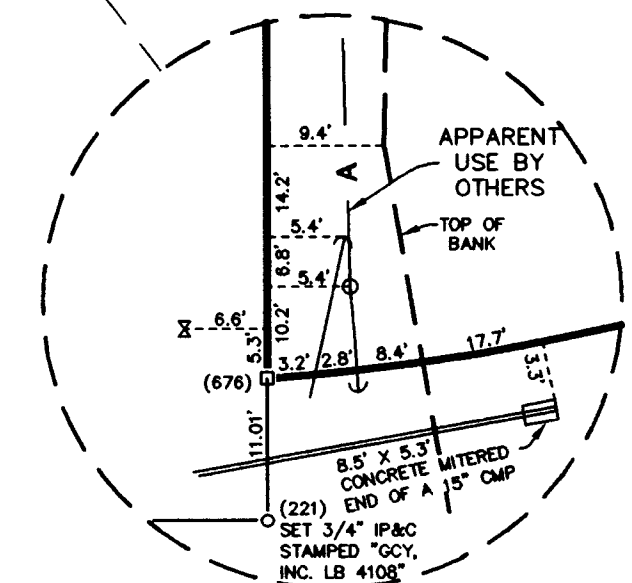


SHEET INDEX

NOTE:
DETAILS SHOWN ON THIS SHEET ARE NOT TO
SCALE OR PROPORTION. DETAIL GRAPHICS HAVE
BEEN DISTORTED FOR READABILITY PURPOSES,
UNLESS A SCALE HAS BEEN PROVIDED.

LEGEND

| ABBREVIATIONS | SYMBOLS |
|---|--|
| (CD) = DEED MEASUREMENT | (A) = AERIAL TARGET AS LABELED |
| (FDOT) = FLORIDA DEPARTMENT OF TRANSPORTATION MEASUREMENT | (A) = AERIAL UTILITY LINE |
| (LD) = LEGAL DESCRIPTION MEASUREMENT | (C) = CHAIN LINK FENCE |
| (M) = FIELD MEASUREMENT | (C) = CHECK POINT FOR AERIAL PHOTOGRAPHY |
| (M&D) = FIELD MEASUREMENT | (C) = CONCRETE UTILITY POLE |
| (PBS) = POST, BUCKLEY, SHOE, & JERNIGAN MEASUREMENT | (C) = ELECTRICAL JUNCTION BOX |
| (V) = POINT NUMBER ASSIGNED TO A COORDINATE PAIR | (C) = ELECTRICAL MANHOLE (FLORIDA POWER & LIGHT) |
| (AT) = PHOTO IDENTIFIABLE AERIAL TARGET NUMBER | (C) = GATE VALVE |
| AZ, MK = AZIMUTH MARK | (C) = SANITARY MANHOLE |
| CB = CHORD BEARING | (C) = LIGHT POST |
| CCRN = CERTIFIED CORNER RECORD NUMBER | (C) = MAILBOX |
| CD = CHORD DISTANCE | (C) = POLE ANCHOR |
| CM = CONCRETE MONUMENT | (C) = SIGN |
| CMP = CORRUGATED METAL PIPE | (C) = UNDERGROUND UTILITY WITNESS POST |
| CP = CHECK POINT - PHOTO IDENTIFIABLE | (C) = UTILITY PEDESTAL |
| CR = COUNTY ROAD | (C) = WATER METER |
| D = DELTA | (C) = WATER VALVE |
| DB = DEED BOOK | (C) = WELL |
| FND = FOUND | (C) = WOOD UTILITY POLE |
| FPAL = FLORIDA POWER AND LIGHT | (C) = SET 4"x4" CONCRETE MONUMENT WITH 4" |
| IP&C = IRON PIPE & CAP | (C) = ALUMINUM DISK STAMPED "MARTIN COUNTY |
| IR&C = IRON ROD & CAP | (C) = SURVEY MARK 2012 GCY INC. LB 4108" AROUND |
| L = LAND SURVEYING BUSINESS | (C) = MARTIN COUNTY SAILFISH LOGO |
| NAVD 88 = NORTH AMERICAN VERTICAL DATUM OF 1988 | (C) = FOUND CONCRETE MONUMENT (AS NOTED) |
| ORB = OFFICIAL RECORDS BOOK | (C) = FOUND IRON ROD OR IRON PIPE (AS NOTED) |
| PB = PLAT BOOK | (C) = CALCULATED POSITION OF SECTIONAL 1/4 CORNER, |
| (PBS) = MEASUREMENTS FROM POST, BUCKLEY, SHOE, & JERNIGAN | (C) = NOT SET, WITH CORRESPONDING SECTION NUMBERS |
| PG = PAGE | (C) = FOUND POSITION OF SECTIONAL 1/4 CORNER (AS |
| POB = POINT OF BEGINNING | (C) = LABELED) WITH CORRESPONDING SECTION NUMBERS |
| POC = POINT OF COMMENCEMENT | |
| PRM = PERMANENT REFERENCE MONUMENT | |
| R = RADIUS | |
| RCP = RIGHT-OF-WAY | |
| RAW = REINFORCED CONCRETE PIPE | |
| RTK = REAL TIME KINETIC | |
| TRAV = TRAVERSE | |



GCY
INCORPORATED
PROFESSIONAL SURVEYORS AND MAPPERS
CERTIFICATE OF AUTHORIZATION LB 4108
CORPORATE OFFICE
PO BOX 1469 • 1505 SW MARTIN HWY.
PALM CITY, FL 34961
(800) 396-1066
TALLAHASSEE OFFICE
1979 MARYLAND CIRCLE
TALLAHASSEE, FL 32303
(850) 536-9455

WITHIN AIRPORT JURISDICTIONAL BOUNDARY SURVEY FOR:
MARTIN COUNTY
MARTIN COUNTY, FLORIDA

| | | |
|------------------|---------------------|----------------------------------|
| Scale: 1"=50' | Date: 10/10/2012 | File & Drawing No: 11-1018-08 |
| Drawn By: JHY | Checked By: ACA | Sheet 10 of 18 |